

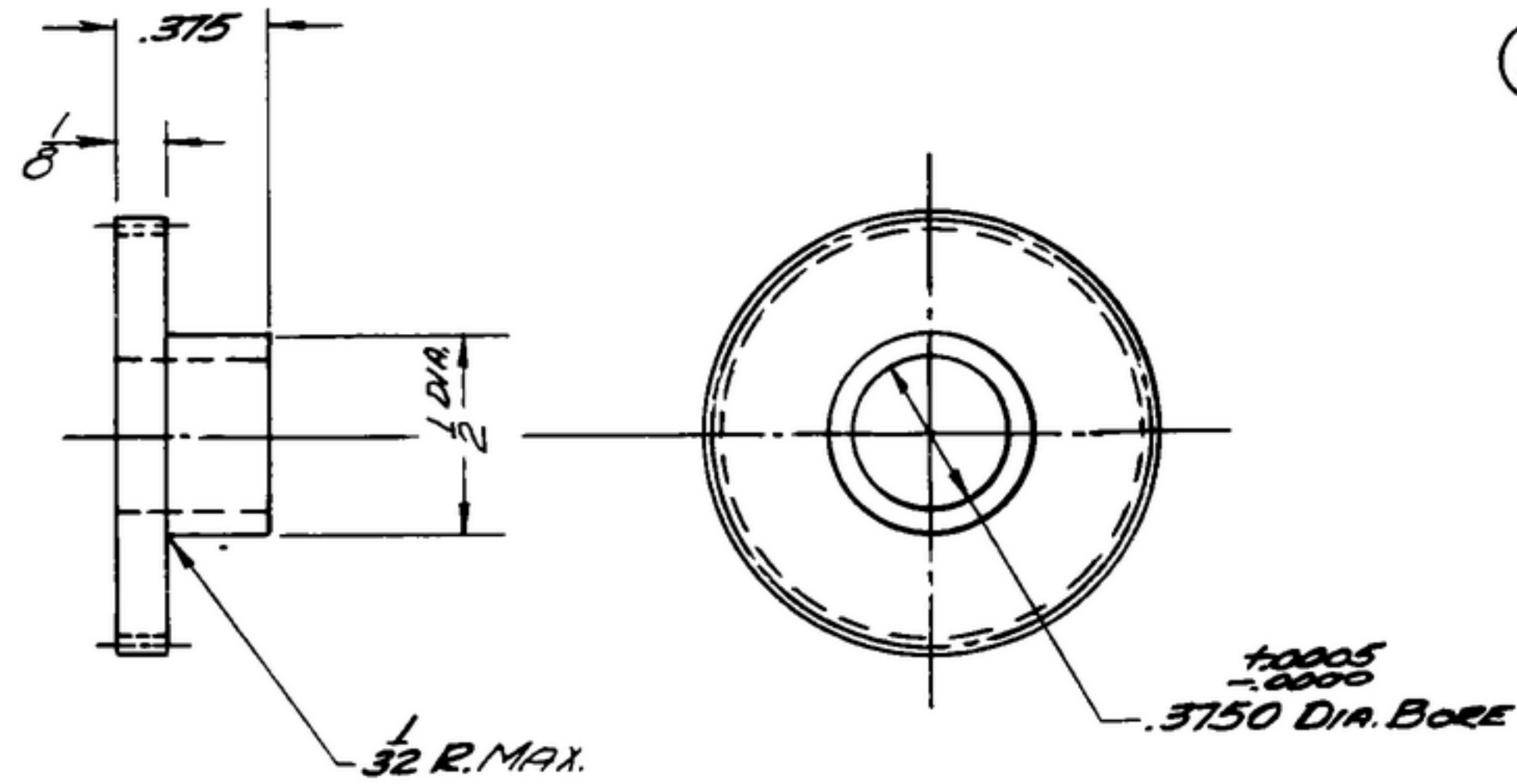
NOTICE: WHEN GOVERNMENT DRAWINGS, SPECIFICATIONS, OR OTHER DATA ARE USED FOR ANY PURPOSE OTHER THAN IN CONNECTION WITH A GOVERNMENTALLY RELATED GOVERNMENT PROCUREMENT OPERATION, THE UNITED STATES GOVERNMENT THEREBY INCURS NO RESPONSIBILITY FOR ANY OBLIGATION WHATSOEVER AND THE FACT THAT THE GOVERNMENT MAY HAVE FORMULATED, FURNISHED, OR IN ANY WAY SUPPLIED THE SAID DRAWINGS, SPECIFICATIONS, OR OTHER DATA IS NOT TO BE REGARDED BY REPLICATION OR OTHERWISE AS IN ANY MANNER LICENSES THE HOLDER OR ANY OTHER PERSON OR CORPORATION, OR INDUSTRY ANY RIGHTS OR PERMISSIONS TO REPRODUCE, TRANSMIT, USE, OR SELL ANY PATENTED INVENTION THAT MAY IN ANY WAY BE RELATED THERETO.

THIS DOCUMENT HAS BEEN PURCHASED BY THE GOVERNMENT AND MAY BE REPRODUCED AND USED IN CONNECTION WITH ANY GOVERNMENT PROCUREMENT OR MAINTENANCE OPERATION.

*FOR INFORMATION ONLY. CONTRACTOR MAY AT HIS OPTION DEVIATE FROM THESE PROCESS DETAILS.

**SWE APPROVAL
SYM PR10042-5*

REVISIONS			
SYM	DESCRIPTION	DATE	APPROVAL
A,	A, ADDED "IRIDITE #7" TO FINISH NOTE	9 OCT 59	42428-PC 59-AI-51 REV'D PME



BRASS, COMP. 24, TEMPER 1/2H, PER SPEC QQ-B-613.

*(A) FINISH: CHEMICAL POLISH PER IRIDITE #7 METCOTE PROCESS BY ALLIED RESEARCH PRODUCTS INC, BALTIMORE MD, OR EQUAL. *COLLINS 580 0034 00 (X SAME AS 572167)*

NOTES:
 1. GEAR DATA
 NORMAL DIAMETRAL PITCH 32
 NORMAL PRESSURE ANGLE 20°
 NUMBER OF TEETH 36
 THEORETICAL PITCH DIAMETER 1.125
 BACKLASH .000 TO .001 WHEN REFERRED TO THE THEORETICAL PITCH CIRCLE.
 TOTAL COMPOSITE ERROR NOT TO EXCEED .003 WHEN MEASURED WITH MASTER GEAR.
 AMERICAN STANDARD INVOLUTE TOOTH FORM
 ALL TERMS USED AS DEFINED BY A.G.M.A. STANDARDS.

COLLINS PART NO.	ITEM	QTY	PART NO.	DESCRIPTION	MATL.	MATL. SPEC.
LIST OF MATERIAL						
COLLINS PART NO. <i>558 0264 002</i>						

DRAWN <i>Mml</i> CHECKED <i>Williams</i> APPROVED _____ UNLESS OTHERWISE SPECIFIED: DECIMAL DIMENSIONS INCLUDING HOLE SIZES MAY VARY ±.005 FRACTIONAL DIMENSIONS INCLUDING HOLE SIZES MAY VARY ±1/64 MACHINED ANGLES MAY VARY ±.1° SHEARED ANGLES MAY VARY ±.25° BROKEN ANGLES MAY VARY ±1° ECCENTRICITY BETWEEN ANY DIAMETERS ON THE SAME CENTERLINE SHALL NOT EXCEED .010 TOTAL INDICATOR READING. ALL DIMENSIONS ARE FINISH DIMENSIONS INCLUDING APPLIED FINISH AND ARE GIVEN IN INCHES.				COLLINS RADIO CO. CEDAR RAPIDS, IOWA 14214-PH-51-93 SIGNAL CORPS REVIEWED <i>PME</i> APPROVED <i>HLV</i> <i>PME</i> DATE <i>8 DEC 55</i> SCALE <i>2/1</i>	DEPARTMENT OF THE ARMY SIGNAL CORPS ENGINEERING LABORATORIES FORT MONMOUTH NEW JERSEY <i>SM-B-248915</i>	
558 0264 002 + <i>SM-B-248915</i> SC-DE-248 775 COLLINS NO. QTY NEXT ASSY USED ON				GEAR - SPUR		
APPLICATION						